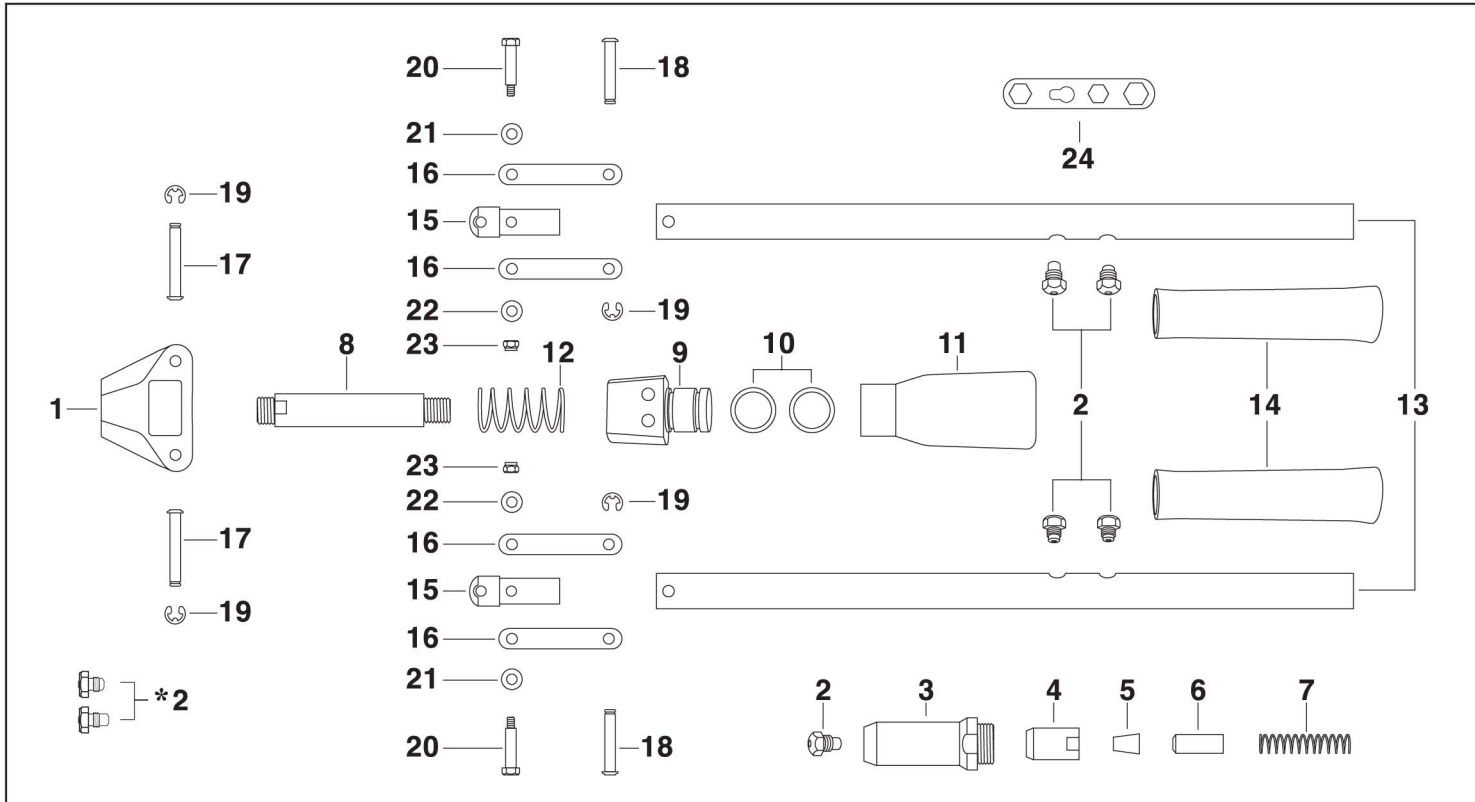


Model GO-40 Industrial & Heavy Duty Lever Type Rivet Tool

■ PARTS LIST



| No. | Part No. | Part Name |
|---------|---------------|--|
| 1 | GO-40 -01 | Body |
| ● 2-32 | GO-40 -02-32 | Nosepiece, for ø3.0/3.2mm or 1/8" Rivet |
| ● 2-40 | GO-40-02-40 | Nosepiece, for ø4.0mm or 5/32" Rivet |
| ● 2-48 | GO-40-02-48 | Nosepiece, for ø4.8/5.0mm or 3/16" Rivet |
| ● 2-60 | GO-40-02-60 | Nosepiece, for ø6.0mm Rivet |
| ● 2-64 | GO-40-02-64 | Nosepiece, for ø6.4mm or 1/4" Rivet |
| ● 2-48M | GO-40 -02-48M | Nosepiece, for ø4.8mm or 3/16" *Monobolt Rivet |
| ● 2-64M | GO-40 -02-64M | Nosepiece, for ø6.4mm or 1/4" *Monobolt Rivet |
| 3 | GO-40-03 | Head |
| 4 | GO-40-04 | Jaw Case |
| ● 5 | GO-40-05 | Jaws, 3-pc type |
| ● 6 | GO-40-06 | Jaw Pusher |

| No. | Part No. | Part Name |
|------|----------|-------------------------|
| ● 7 | GO-40-07 | Jaw Pusher Spring |
| 8 | GO-40-08 | Traction Sleeve |
| 9 | GO-40-09 | Traction Seat |
| ● 10 | GO-40-10 | O-Ring |
| ● 11 | GO-40-11 | Spent Mandrel Container |
| 12 | GO-40-12 | Torsion Spring |
| 13 | GO-40-13 | Handle |
| 14 | GO-40-14 | Grip |
| 15 | GO-40-15 | Joint |
| 16 | GO-40-16 | Arm, L76 |
| 17 | GO-40-17 | Pin, L329 |
| 18 | GO-40-18 | Pin, L268 |
| 19 | GO-40-19 | Snap Ring |
| 20 | GO-40-20 | Bolt, L-252 |
| 21 | GO-40-21 | Washer, ø12x6 |
| 22 | GO-40-22 | Washer, ø10x5 |
| 23 | GO-40-23 | Nylon Nut |
| 24 | GO-40-24 | Wrench |

■ REMARKS:

1) ● means Wearing Parts and Possible Missing Parts.

2) Order example: GO-40 -05 Jaws, 3-pc. 20 sets.

3) GO-40 Lever Type Rivet Tool also can set ø4.8 mm (3/16") & ø6.4 (1/4") *Monobolt Rivets. The *Monobolt Nosepieces(GO-40-02-48M,GO-40-02-64M) for setting *Monobolt Rivets are available on request. *Monobolt is a registered trademark of Avdel®.

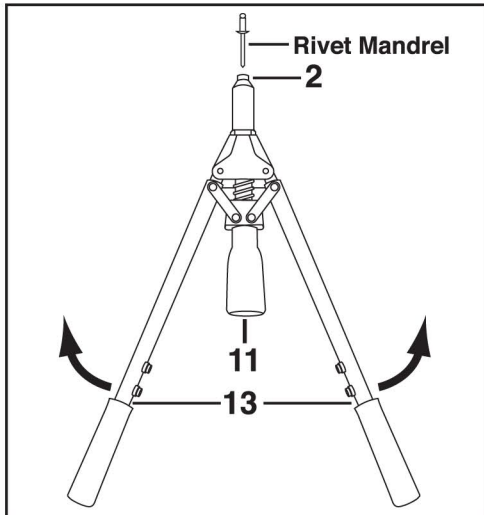


Fig.1

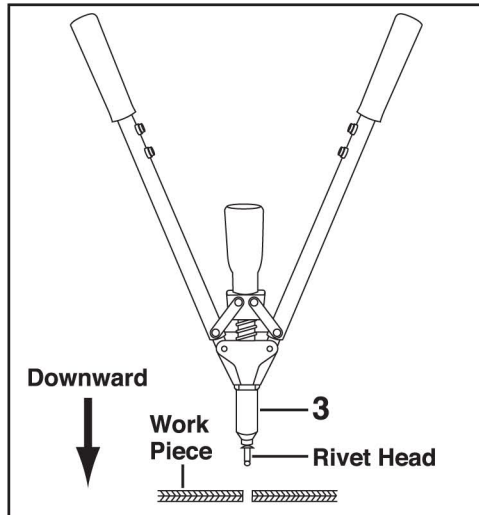


Fig.2

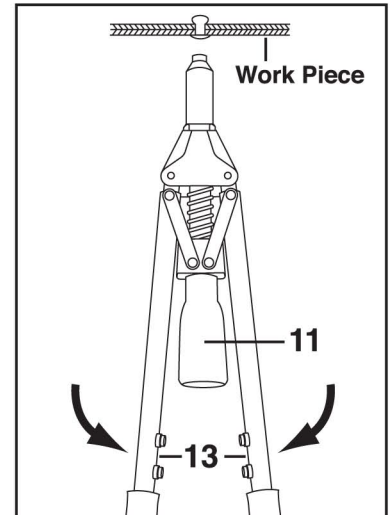


Fig.3

■ HOW TO OPERATE GO-40 LEVER TYPE RIVET TOOL:

- 1) Open 2 Handles (13) fully, insert Rivet Mandrel all the way into Tool Nosepiece (2) (Fig.1), Rivet can be kept in Tool even Tool Head (3) is downward, then insert Rivet Head into the prepared hole of Work Piece completely (Fig.2).
- 2) Squeeze 2 Handles (13) toward each other until Rivet Mandrel breaks off (Fig.3). If more than one squeeze is required, open 2 Handles (13) fully and push Nosepiece (2) to contact Rivet Head, then squeeze Tool Handles again.
- 3) Open 2 Handles (13) fully to eject Rivet Mandrel from Tool into Spent Mandrel Container (11). When Spent Mandrels fill Spent Mandrel Container (11) over 70% capacity, pull out Spent Mandrel Container (11) to clear off all Spent Mandrels, then put it back and fix it firmly.

■ HOW TO CLEAN AND CHANGE JAWS (5), JAW PUSHER (6) AND JAW PUSHER SPRING (7):

- 1) If Jaws (5) can not bite or slip on the Rivet Mandrel, it is suggested to clean teeth of Jaws or change new Jaws (5). When 2 Handles (13) are fully opened, but Jaws (5) are still not open completely, it is suggested to check and change new Jaw Pusher (6), Jaw Pusher Spring (7) and Nosepiece (2).
- 2) Close 2 Handles (13) completely, unscrew Head (3) and Jaw Case (4), take out Jaws (5), Jaw Pusher (6) and Jaw Pusher Spring (7) to clean or change them.
- 3) Lubricate thin oil on Jaws' outside, then reverse above steps to reassemble.

■ HOW TO CHANGE NOSEPIECE (2):

Close 2 Handles (13) completely, use Wrench (24) to unscrew Nosepieces (2), replace and tighten Nosepieces (2) with Wrench (24).

WARNING



- FOR SAFETY WORK, ALWAYS WEAR SAFETY GOGGLES.
- WHEN OPERATING, ALWAYS FIX SPENT MANDREL CONTAINER (11) TO TOOL FIRMLY.
- TOOL MUST CLEAR OFF AND EJECT THE SPENT MANDREL INTO SPENT MANDREL CONTAINER (11) BEFORE SETTING NEXT RIVET.